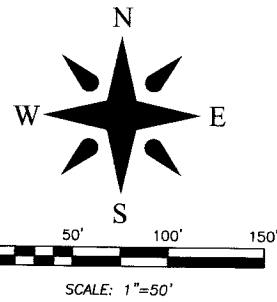


- 1. = DENOTES SET 4" X 4" CONCRETE MONUMENT
- 2. = STAMPED "P.R.M. WALLACE L.B. # 4589"
- 3. = MAG NAIL & DISK STAMPED "P.R.M. WALLACE L.B. # 4589"
- 4. = BASELINE
- 5. = CENTERLINE
- 6. = RIGHT OF WAY
- 7. = PLAT BOOK
- 8. = PAGES
- 9. = SECTION
- 10. = TOWNSHIP
- 11. = RANGE
- 12. = UTILITY EASEMENT
- 13. = DRAINAGE EASEMENT
- 14. = DEED BOOK
- 15. = ARC LENGTH
- 16. = CENTRAL ANGLE
- 17. = RADIUS
- 18. = CHORD BEARING
- 19. = OFFICIAL RECORDS BOOK
- 20. = ROAD PLAT BOOK
- 21. = LIMITED ACCESS EASEMENT
- 22. = POINT OF COMMENCEMENT
- 23. = POINT OF BEGINNING
- 24. = PALM BEACH COUNTY
- 25. = PERMANENT REFERENCE MONUMENT
- 26. = FOUND
- 27. = EASEMENT
- 28. = WESTERLY
- 29. = FLORIDA POWER AND LIGHT
- 30. = SAFE RIGHT EASEMENT
- 31. = NORTH
- 32. = EASTING
- 33. = SEACOAST UTILITY AUTHORITY
- 34. = STATE ROAD NUMBER
- 35. = ALSO KNOWN AS
- 36. = DENOTES 5/8" IRON ROD CAP STAMPED "P.R.M. WALLACE L.B. # 4589"

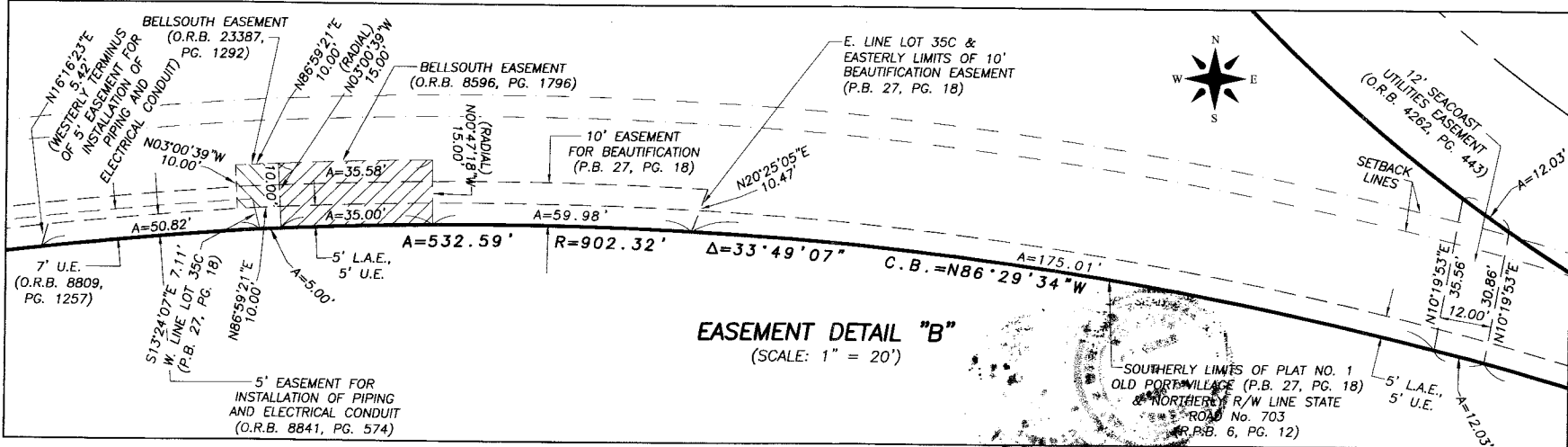
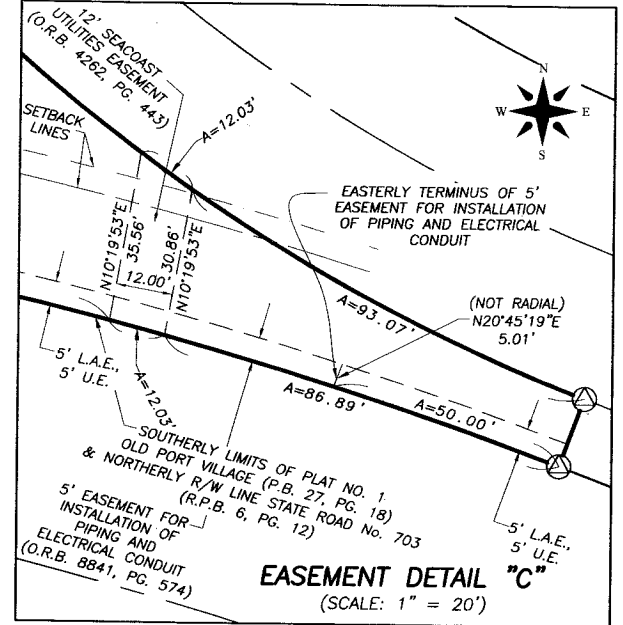
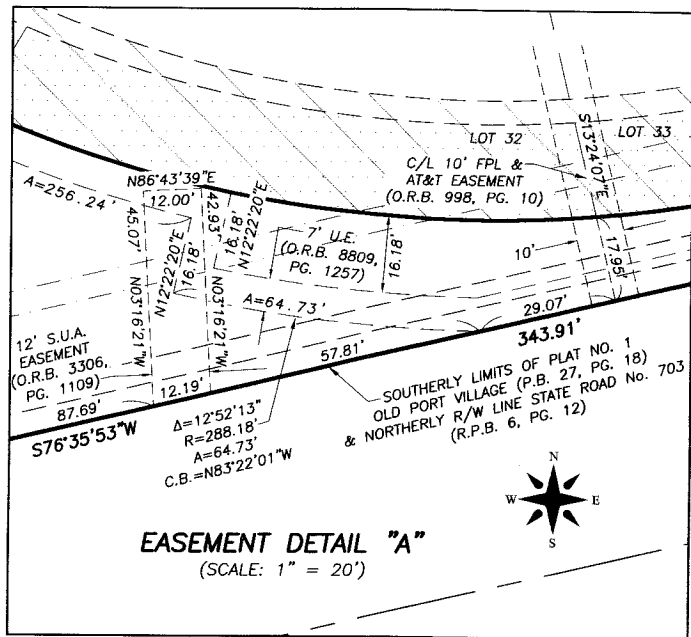
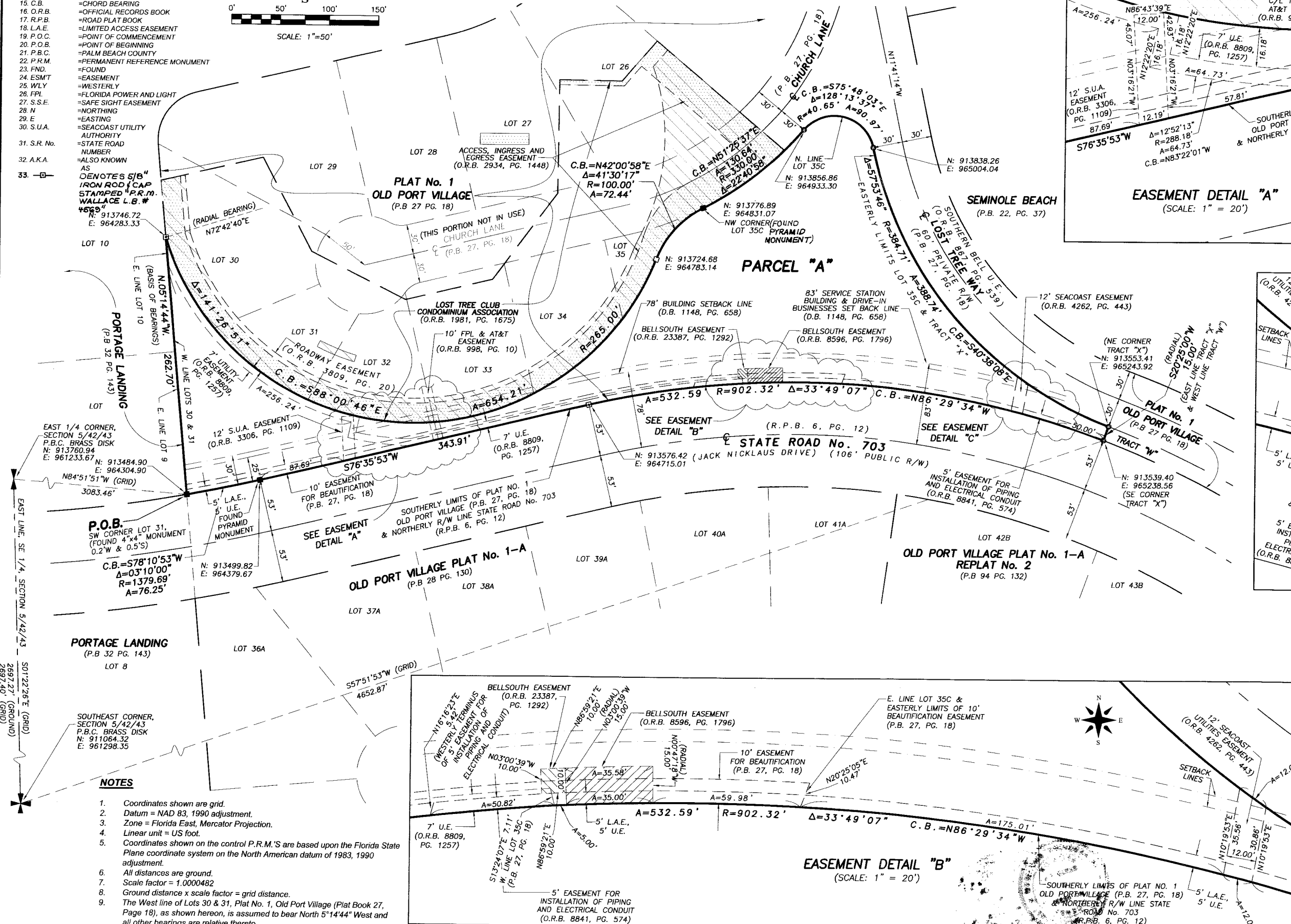


# LOST TREE CLUB FITNESS CENTER

BEING A REPLAT OF A PORTION OF LOTS 30, 31, 32, 33, 34, 35, ALL OF LOT 35C AND ALL OF TRACT "X", PLAT No. 1, OLD PORT VILLAGE, ACCORDING TO THE PLAT THEREOF, AS RECORDED IN PLAT BOOK 27, PAGE 18, LYING IN SECTION 4, TOWNSHIP 42 SOUTH, RANGE 43 EAST, PALM BEACH COUNTY, FLORIDA  
MAY, 2012

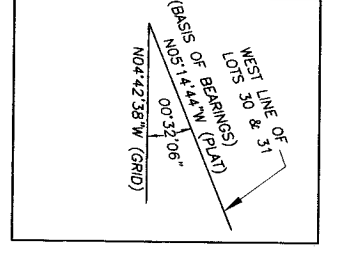
161

SHEET 2 OF 2



- NOTES**
1. Coordinates shown are grid.
  2. Datum = NAD 83, 1990 adjustment.
  3. Zone = Florida East, Mercator Projection.
  4. Linear unit = US foot.
  5. Coordinates shown on the control P.R.M.'S are based upon the Florida State Plane coordinate system on the North American datum of 1983, 1990 adjustment.
  6. All distances are ground.
  7. Scale factor = 1.0000482
  8. Ground distance x scale factor = grid distance.
  9. The West line of Lots 30 & 31, Plat No. 1, Old Port Village (Plat Book 27, Page 18), as shown hereon, is assumed to bear North 5°14'44" West and all other bearings are relative thereto.

**BEARING ROTATION EQUATION**



**PLAT OF  
LOST TREE CLUB  
FITNESS CENTER**



FIELD:	JOB No.: 94-1155.29	F.B.	PG.
OFFICE: R.C.	DATE: OCT. 2011	DATE:	DWG. No.: 94-1155-14
CKD:	REF.: 94-1155-14.DWG	SHEET 2 OF 2	